

example REAL ESTATE





## Seaforth 6a Baranbali Avenue

### Family Friendly with Dream Alfresco

If you're looking for a modern, clean and affordable home then look no further. This family friendly home offers all the open plan modern features a growing family desires, and the added lifestyle benefits of the nearby parks and much more.

What's most impressive about the home is the backyard with comprehensive alfresco, which includes jacuzzi, heating and wall mounted TV. Just imagine the amazing work/life balance created by having this exceptional outdoor entertainment area incorporated into your next home. Ideal for entertaining and will impress any young family looking to live in a quiet leafy location.

Features:

- 3 bedrooms, two with outlook onto courtyard
- Incredible alfresco with jacuzzi, TV, gas BBQ, pizza oven and includes heating/cooling
- Brand new home gym area/large rumpus
- Modern kitchen
- Reverse cycle air-conditioning
- Lockup garage with work benches
- Located within walking distance to schools, cafes and shops

About Seaforth:

With the heart of Seaforth Village, local schools and famed Four Brothers cafe only a short 300 metres stroll from the home it is perfectly located on an idyllic Seaforth street. Baranbali playground and tennis courts are both 2 minutes' away, and adventurous bike tracks all within easy access.

**Leased \$1,400pw**

3 2 2

### Inspect

Inspection of this property is available strictly by arrangement only.

### Contact



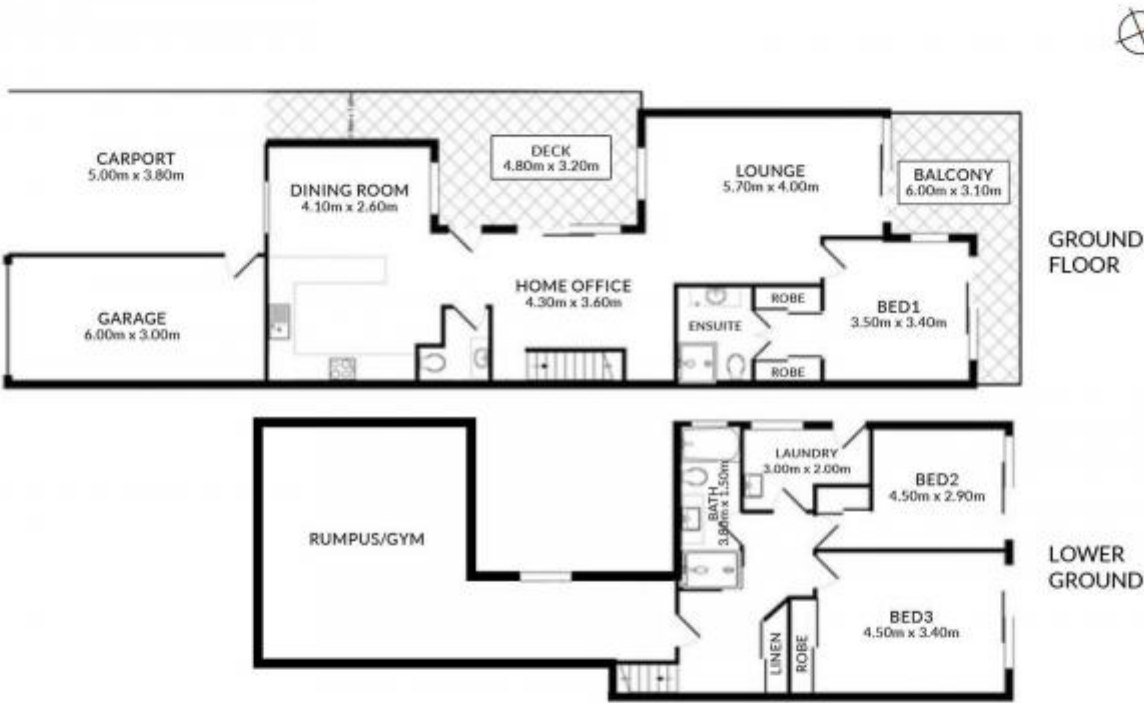
Hugo Ortega

hugo@etchrealestate.com.au  
0414 604 504



Luljeta Ortega

lu@etchrealestate.com.au  
0405 379 540



SEAFORTH 6A BARANBALI AVENUE  
etchrealestate.com.au

This floor plan is provided for indicative purposes only. Measurements are approximate and not to scale. The vendor, agency and supplier will accept no liability for its accuracy. Interested parties are advised to make their own independent enquiries.

